

net-alyzer

Internet Management System

net-alyzer is a dynamic internet and email-reporting tool that can be used in any size organisation. It tracks and reports on all defined activity by firewall/proxy servers and email servers. *net-alyzer* does not restrict or inhibit the benefits of Internet connectivity, however it will identify any inappropriate or excessive Internet activity, giving the user an opportunity to establish acceptable guidelines of Internet activity within an organisation.

net-alyzer enables you to establish:

- (1) The source, destination and volume of E-mail traffic
- (2) Your company's Internet browsing patterns
- (3) How your company is using its Internet connection
- (4) Bandwidth management

As the use of the Internet expands, employers should be reasonably confident that staff who have been given access will restrict their Internet usage to relevant and productive purposes. However some users of the Internet may - even unwittingly - expose the organisation to the risk of serious legal action through, for example, the downloading of inappropriate materials and their display in the workplace.

In addition, it is well recognised that users spend far more time browsing than they realise, and this can lead to very inefficient use of company time.

To guard against these issues some form of monitoring and control will become an essential part of the Internet.

net-alyzer provides a simple enterprise-wide, solution.

net-alyzer can work with a number of proxy servers, firewalls and E-mail servers and is OPSEC compliant.

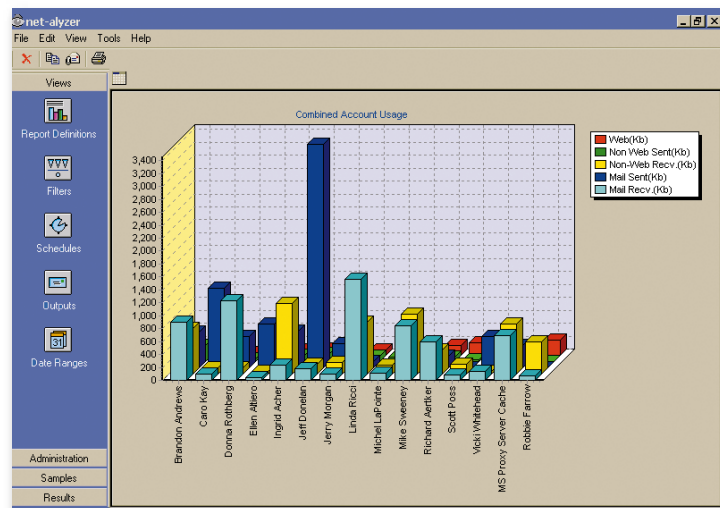
IP Tracking

As most people remain associated with their equipment our 'IP Track' solution provides a hassle free way of solving the DHCP problem. *net-alyzer* handles dynamic IP addresses in most DHCP configurations and constantly monitors and logs the allocation of IP addresses to equipment. It then imports the log files and uses this information to associate activity with a machine rather than just an IP address.



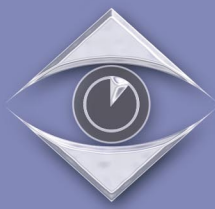
E-mail Management

With the recent increase in E-mail usage, an issue for many companies is that of assessing and controlling bandwidth use. By analysing E-mail server logs, *net-alyzer* precisely identifies E-mail source, destination and volume, and can help to identify actual bandwidth usage and requirements.



softex

e-mail: info@net-alyzer.net
www.net-alyzer.net



Powerful & flexible reporting

A report wizard within *net-alyzer* is designed to assist and guide you through setting up all of the user-defined reports. A filter wizard further allows the user to achieve concise and comprehensive report results. Many reports can be charted using a wide range of controls, for example, specifying columns to graph, 2D or 3D format, legend and axis description.

The definitions use the following report types, from which almost any report can then be configured:

- Combined Account Usage,
- Most Popular Sites by Duration,
- Sites accessed by Person,
- Website Directories by Person,
- Combined Quarter Hourly Usage,
- External E-mail Addresses by Volume,
- Chronological Mail,
- Chronological Firewall/Proxy activity.

Activity is divided into three main classes, 'Web', 'Non-Web' and 'E-mail'.

It is possible to configure reports to operate for any time period including relative time periods such as 'last week'.

Each report can be set for different individuals and user definable groups within an organisation.

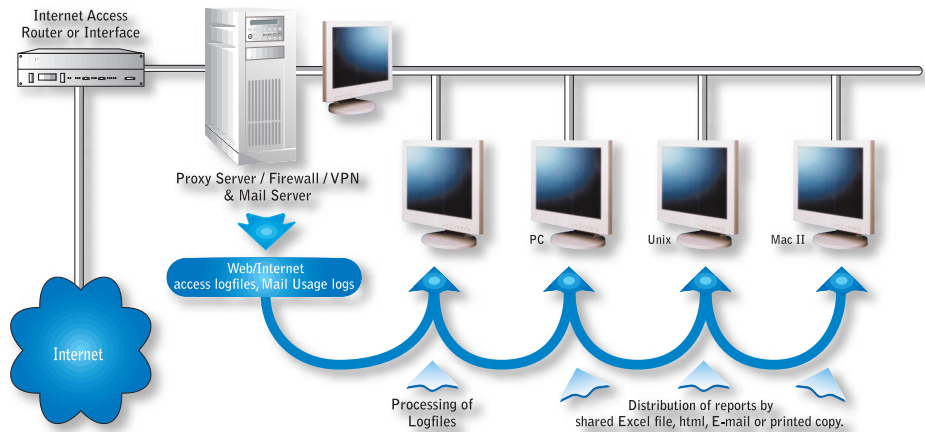
It is possible to refine reports with user defined filters.

Individual columns can be included or excluded from reports.

Individual reports can be sorted by specific columns.

It is also possible to limit the number of results presented which simplifies the management of reports when dealing with large volumes of data.

Reports in Excel or HTML format can be further customised by embedding the reports in a template. For example, it is possible to arrange reports to include an organisations logo and distinctive message at the top and base of the report.



The above diagram shows the acquisition, processing and distribution of Internet usage information in *net-alyzer*.

Report Distribution Methods

All reports can be scheduled and distributed to screen, file, printer, email or web and can be output in variety of formats including .xls and HTML. In addition, an individual report can be sent to several of the above destinations simultaneously.

User	Website	Accesses	Duration
Peter Jones	www.google.com	15	0:05:30
Shiraz Nguyen	www.yahoo.com	12	0:04:15
Begley Rothberg	www.msn.com	8	0:03:45
Emilio Altiero	www.earthlink.net	5	0:02:30
Chip Acher	www.earthlink.net	4	0:02:15
Adrian Wallace	www.earthlink.net	3	0:01:45
Morgan Leahy	www.earthlink.net	2	0:01:30
Isabella Ricci	www.earthlink.net	1	0:01:15
Michael LaPointe	www.earthlink.net	1	0:01:00
Gunther Murray	www.earthlink.net	1	0:00:45
Richard Blaney	www.earthlink.net	1	0:00:30
Scott McGrane	www.earthlink.net	1	0:00:15
Ella Flynn	www.earthlink.net	1	0:00:15
Jordan Devereux	www.earthlink.net	1	0:00:15
Stefan Pavlov	www.earthlink.net	1	0:00:15
Total		67	0:03:00

User	Web Hits	Non-Web	Mail Total	Total	Estimated Cost	Account Usage	% Account Usage	
Peter Jones	57	52	1077	1552	2,428	2,772	1,36.48	9.83%
Shiraz Nguyen	56	123	92	199	1856	4,528	1:14.00	7.41%
Begley Rothberg	34	67	546	1332	1914	2,100	1:16.24	7.65%
Emilio Altiero	77	44	28	96	950	1,008	0:38.00	3.80%
Chip Acher	98	70	474	1320	2065	2,100	1:22.24	8.25%
Adrian Wallace	123	123	88	334	4015	5,292	2:40.24	16.05%
Morgan Leahy	49	87	91	278	821	1,484	0:32.48	3.28%
Isabella Ricci	80	98	869	2360	2635	2,184	1:45.12	10.53%
Michael LaPointe	78	99	79	240	479	1,568	0:18.48	1.88%
Gunther Murray	56	78	842	1776	2297	2,044	1:31.36	9.17%
Richard Blaney	88	12	360	963	1369	1,260	0:54.24	5.44%
Scott McGrane	208	7	79	225	463	1,064	0:18.24	1.84%
Ella Flynn	22	98	100	183	888	1,540	0:35.12	3.52%
Jordan Devereux	102	78	657	1457	2005	2,856	1:20.00	8.01%
Stefan Pavlov	148	13	29	561	795	4,956	0:31.36	3.16%
Total	1286	1096	5411	12916	24980	37,156	16:39:12	100.00%

